

Information for Masters Trailers



•Small

4m Monty



4m Morris



4.6m Midge



•Medium

6m Morton



6.5m Molly



6.6m Mungo



•Large

10.6m P18



11m MOP1



MONTY 4.6 x 2.3m Event Trailer

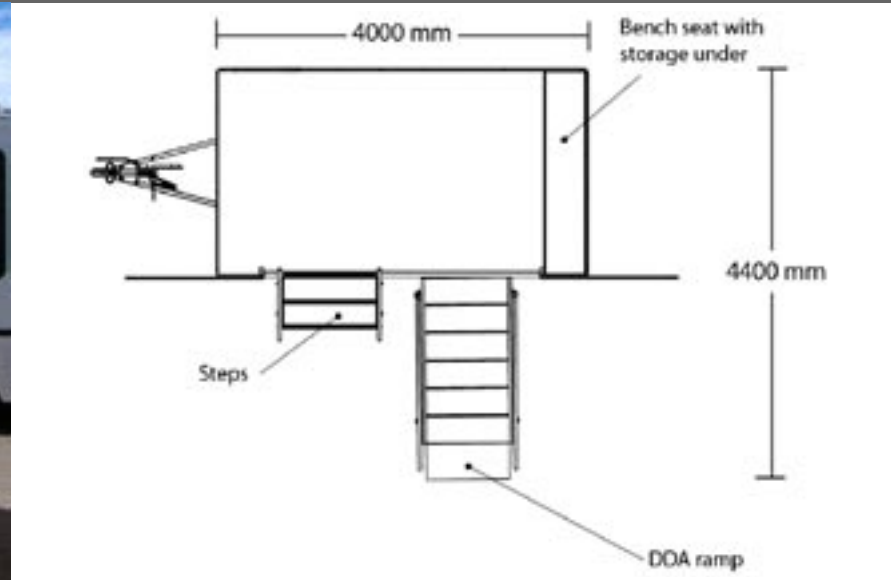
t: 01732 740370
e: info@mastersexhibitions.co.uk
w: www.mastersexhibitions.co.uk

Description:

A versatile little event trailer providing a bright, open space to create your own environment. Ideal for roadshows, events and promotions where limited space is available, maximum impact required. Excellent branding opportunities inside and out.

Technical info:

Mains Power: 32amp Blue ceeform connection
Minimum Plot size: Wing doors open: 6m x 5m
Left wing panel open: 6m x 5m
Both wing panels open: 8m x 5m
Graphics: x2 panels either side of front entrance
Large internal graphic space. x2 flag poles



Features:

- Fitted bench seating with under storage
- Large inviting wing door entrance
- Flag poles and extensive internal and external graphic display panels
- Translucent ceiling tiles allow natural light in
- Rear personnel door

Additional items available for hire:

Furniture, Generator, Plasma screen, printed Graphics and flags, Generator, DDA ramp

MORRIS 6.5 x 2.3m Event Trailer

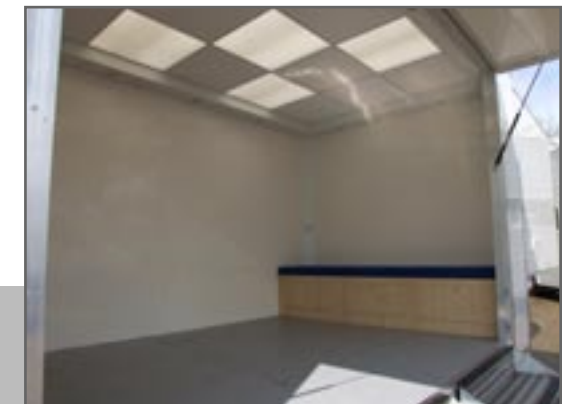
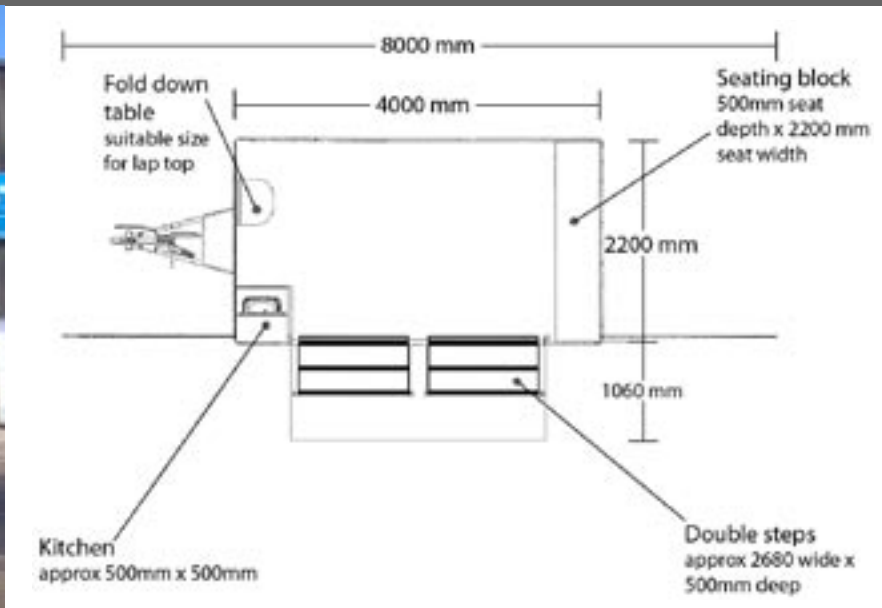
t: 01732 740370
e: info@mastersexhibitions.co.uk
w: www.mastersexhibitions.co.uk

Description:

Superb little multi-purpose event trailer providing everything you need for your roadshows, promotions and product sampling. Open fronted and providing up to 8 metres of brandable space with the optional wing display panels open, creating a big splash for a small price.

Technical info:

Mains Power: 32amp Blue ceeform connection
Minimum Plot size: Wing panels closed: 5.5m x 5m, left wing panel open: 6m x 5m, both wing panels open: 8m x 5m
Graphics: x2 panels either side of front entrance, x2 optional 4m/sq panels, x1 header fascia panel, large internal graphic space, x2 flag poles



Features:

- Fitted small kitchen area with own water supply and milk cooler
- Fold down computer tables for flexible use
- Fitted bench seating with under storage
- Large open entrance with solid awning entrance cover
- Flag poles and extensive internal and external graphic display panels
- Optional 4m/sq external graphic panels either end
- Translucent ceiling tiles allow natural light in
- Rear personnel door

Additional items available for hire:

Furniture, Generator, Plasma screen, printed Graphics and flags, Generator, DDA ramp

MIDGE 4.6 x 2.3m Event Trailer

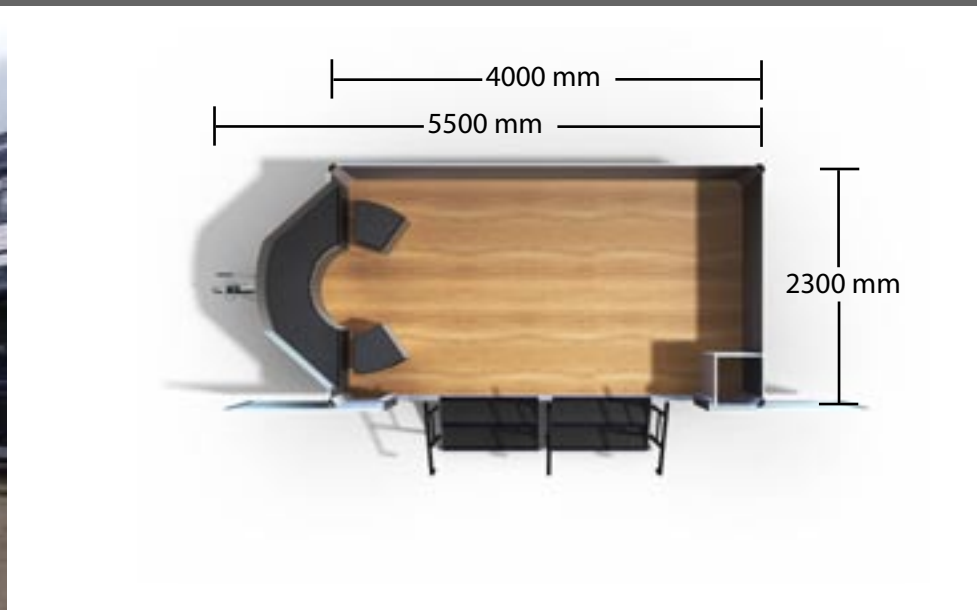
t: 01732 740370
e: info@mastersexhibitions.co.uk
w: www.mastersexhibitions.co.uk

Description:

A small trailer with big appeal. This great little multi-purpose event trailer has a bright and inviting atmosphere. Ideal environment for roadshows, promotions and product sampling. Curved seating provides an intimate meeting area for clients. Ample space for graphics and eye catching video promotions.

Technical info:

Mains Power: 32amp Blue ceeform connection
Minimum Plot size: Wing doors open: 6.5m x 4m
Graphics: x2 A0 wing panels poster frames at entrance, x1 header fascia panel, x4 internal A1 poster frames, x2 flag poles



Features:

- Fitted curved seating area in nose cone extension
- Central back wall feature for LCD screen to run eye-catching presentations
- Cupboard and under seat storage space
- Large open entrance with solid awning entrance cover
- Flag poles and extensive internal and external graphic display panels
- Translucent ceiling tiles allow natural light in
- Rear personnel door

Additional items available for hire:

Furniture, Generator, Plasma screen, printed Graphics and flags, Generator, DDA ramp

MORTON 6.5 x 2.3m Event Trailer

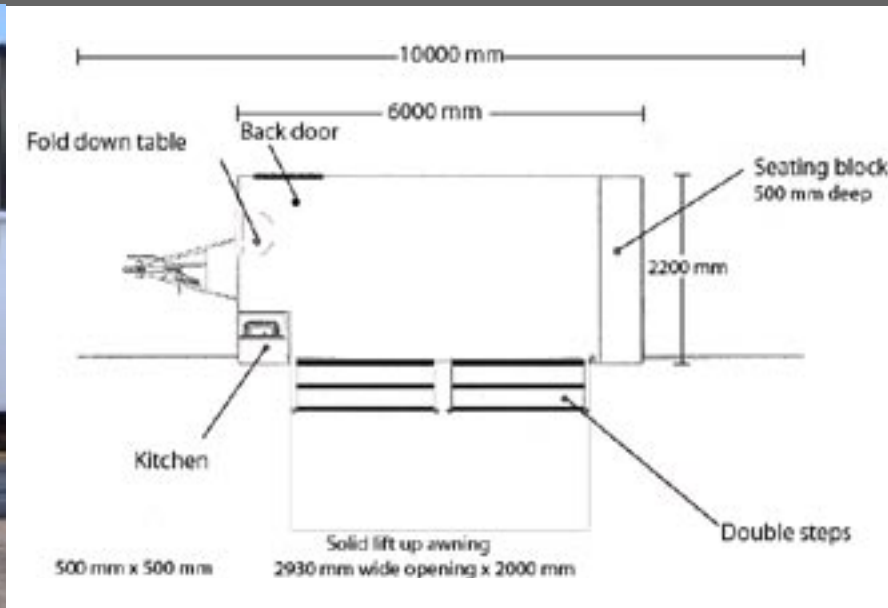
t: 01732 740370
e: info@mastersexhibitions.co.uk
w: www.mastersexhibitions.co.uk

Description:

Spacious 6 metre multi-purpose exhibition unit. Large open fronted trailer with optional extending graphic panels either end and ample display space inside. Adaptable to suit all your exhibition requirements from roadshows and promotions to displays and hospitality.

Technical information:

Mains Power: 32amp Blue ceeform connection
Minimum Plot size: Wing panels closed: 7.5m x 5m, left wing panel open: 8m x 5m, both wing panels open: 10m x 5m
Graphics: x2 panels either side of front entrance, x2 optional 4m/sq panels, x1 header fascia panel
large internal graphic space. x2 flag poles



Features:

- Fitted small kitchen area with own water supply and milk cooler
- Two fold down computer tables for flexible use
- Fitted bench seating with under storage
- Large open entrance with solid awning entrance cover
- Optional 4m/sq external graphic panels either end
- Translucent ceiling tiles allow natural light in
- Rear personnel door

Additional items available for hire:

Furniture, Generator, Plasma screen, printed Graphics and flags, Generator, DDA ramp

MOLLY 6.5 x 5.4m Hospitality Trailer

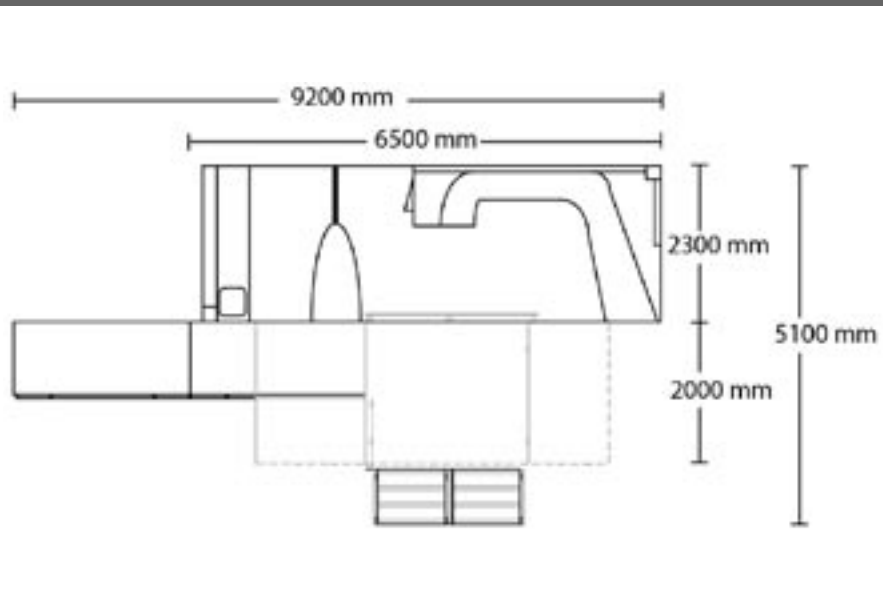
t: 01732 740370
e: info@mastersexhibitions.co.uk
w: www.mastersexhibitions.co.uk

Description:

The ideal hospitality unit for entertaining your guests in style. Open plan interior with galley style kitchen, serving counter and ample seating for your clients. Brandable graphic spaces inside and out to make you stand out from the crowd.

Technical Information:

Mains Power: 32amp Blue ceeform connection
Minimum Plot size: Without ramp: 9m x 5.5m
With ramp: 10.5m x 5.5m
Graphics: x2 front entrance panels, x1 header panel, x4 Internal graphic panels



Features:

- fitted galley kitchen with own water supply
- serving bar / reception desk
- fitted curved seating
- sliding glass doors
- front entrance platform / stage area with steps and optional ramp
- wind out sunshine awning
- flag poles, internal and external graphic display panels and header board
- Rear personnel door

Additional items available for hire:

Furniture, Generator, Plasma screen, printed Graphics and flags, Generator, DDA ramp

MUNGO 6.6m + pod Hospitality Trailer

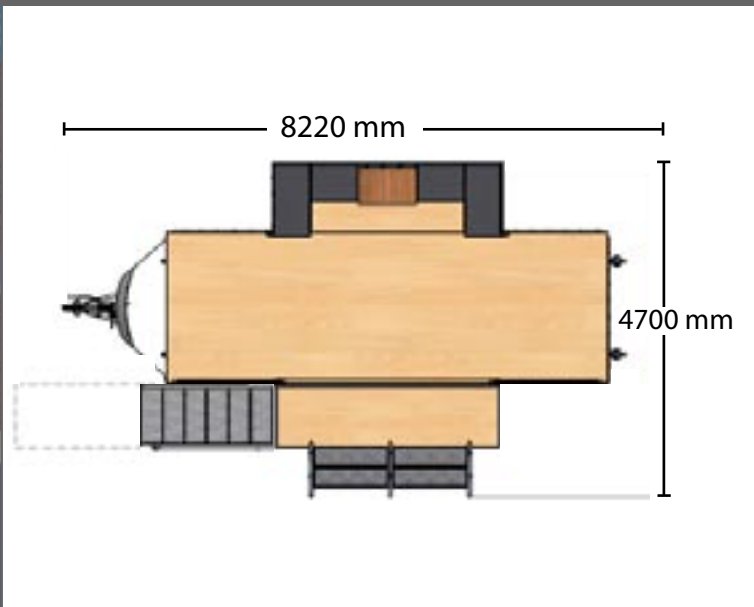
t: 01732 740370
e: info@mastersexhibitions.co.uk
w: www.mastersexhibitions.co.uk

Description:

Bright and inviting, wide front entrance with sliding glass doors, solid lift-up awning and front entrance platform, steps and optional ramp. Main body 6m x 2.3 metre with additional 3.2m x 1m pod extension. Fitted with all round padded seating, central cupboard feature and back wall for mounting an LCD screen to run your eye-catching promotional presentations.

Technical info:

Mains Power: 32amp Blue ceeform connection
Minimum Plot size: Without ramp: 9m x 5.5m, with ramp: 10.5m x 5.5m
Graphics: x2 front entrance panels, x1 header panel, x4 Internal graphic panels
Ramp: DDA compliant non-slip ramp with handrails



Features:

- galley kitchen with own water supply (optional)
- Additional 3m x 1m pod and nose cone extensions with fitted padded seating
- central cupboard feature and back wall for mounting an LCD screen to run eye-catching presentations.
- wide glass sliding door entrance
- front entrance platform area with solid lift up awning, steps and optional ramp
- excellent branding opportunities with flag poles, internal and external graphic display panels
- Translucent ceiling tiles allow natural light in
- Rear personnel door

Additional items available for hire:

Furniture, Generator, Plasma screen, printed Graphics and flags, Generator, DDA ramp

P18 10.6 x 4.6m Hydraulic Demountable Unit

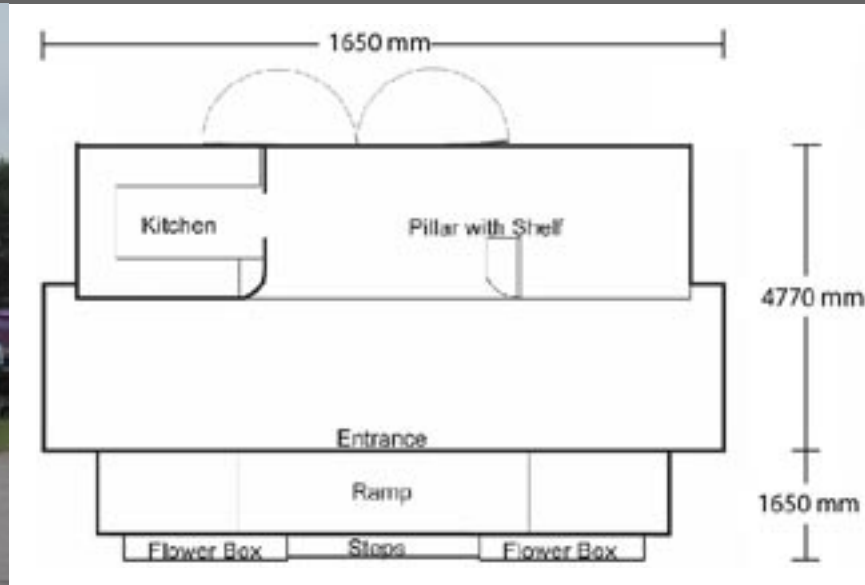
t: 01732 740370
e: info@mastersexhibitions.co.uk
w: www.mastersexhibitions.co.uk

Description:

Prestigious, large, open plan executive unit. Ideal for entertaining clients, promotions, product launches and brand awareness. Ample space for tables, chairs, buffet table and displays to create a relaxed, friendly atmosphere. Optional 9m x 6m solid walled marquee extension available for hire.

Technical info:

Water: Mains supply or water containers available
Mains Power: 32amp Blue ceeform connection
Minimum Plot size: With or without ramp: 11m x 7m, with marquee extension to rear: 12m x 14m



Features:

- Large fitted kitchen with sink, fridges, ample workspace and cupboards.
- 10.6m x 2.5m main body with full length 2m deep pod extension
- Ground leveling unit provides easy access into unit
- Wide inviting front entrance with sliding glass doors, platform, steps and ramps
- Flag poles, internal and external graphic display space and header board
- Rear double doors
- Optional solid walled rear marquee extension with raised platform flooring for hire

Additional items available for hire:

Furniture, Generator, Plasma screen, printed Graphics and flags, Generator, DDA ramp

masters
EXHIBITIONS & SHOWS

MOP1 11 x 4.7 Unit

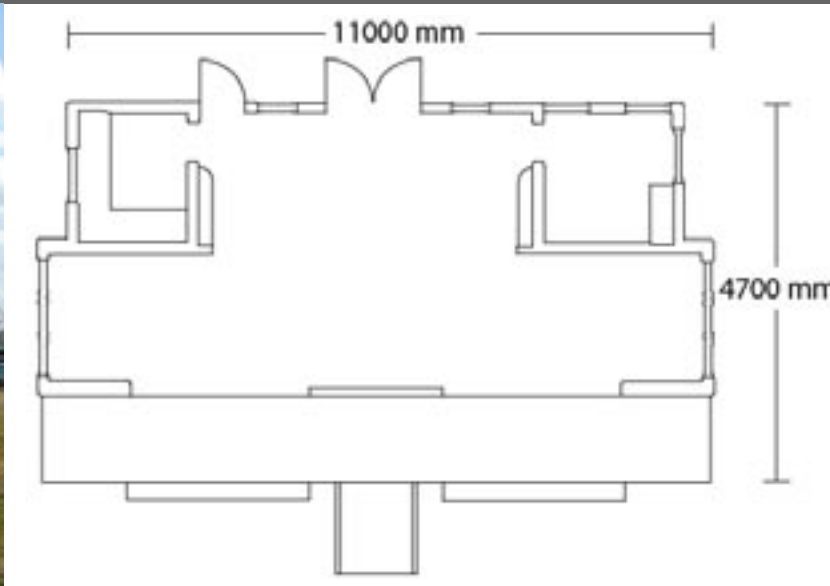
t: 01732 740370
e: info@mastersexhibitions.co.uk
w: www.mastersexhibitions.co.uk

Description:

Large, spacious, demountable exhibition unit with full length pod extension. Two wide front entrances to entice clients in. Ample space to create the perfect atmosphere for entertaining clients, product launches, promotions and merchandise sales. Fitted kitchen and separate office / large storage room.

Technical info:

Water: Self sufficient water tank
Mains Power: 32amp Blue ceeform connection
Minimum Plot size: Without front platform ramp: 11m x 7m, with front platform ramp: 11m x 9.5m
Graphics: x1 large front entrance panel, x1 full length header panel, Internal graphic space, x4 flag poles
Ramp: DDA compliant non-slip front platform, steps and ramp (optional)



Technical Information:

Features:

- Fitted kitchen with self contained water tank
- Front counter/reception counter
- 11m x 2.5m main body with full length 2m deep pod extension
- Two wide, inviting, front entrances with sliding glass doors, platform, steps and optional ramp
- full length wind out sunshine awning
- internal and external graphic display space and header board, x 4 flag poles
- Rear personnel door

Additional items available for hire:

Furniture, Generator, Plasma screen, printed Graphics and flags, Generator, DDA ramp



Works, Operations, Sales and Design

Masters Exhibitions & Shows
Units 3-4 North Downs Business Park,
Pilgrims Way,
Dunton Green,
Sevenoaks,
Kent,
TN13 2TL

t: 01732 740370

f: 01732 462854

e: celia@mastersexhibitions.co.uk

w: <http://www.mastersexhibitions.co.uk/>